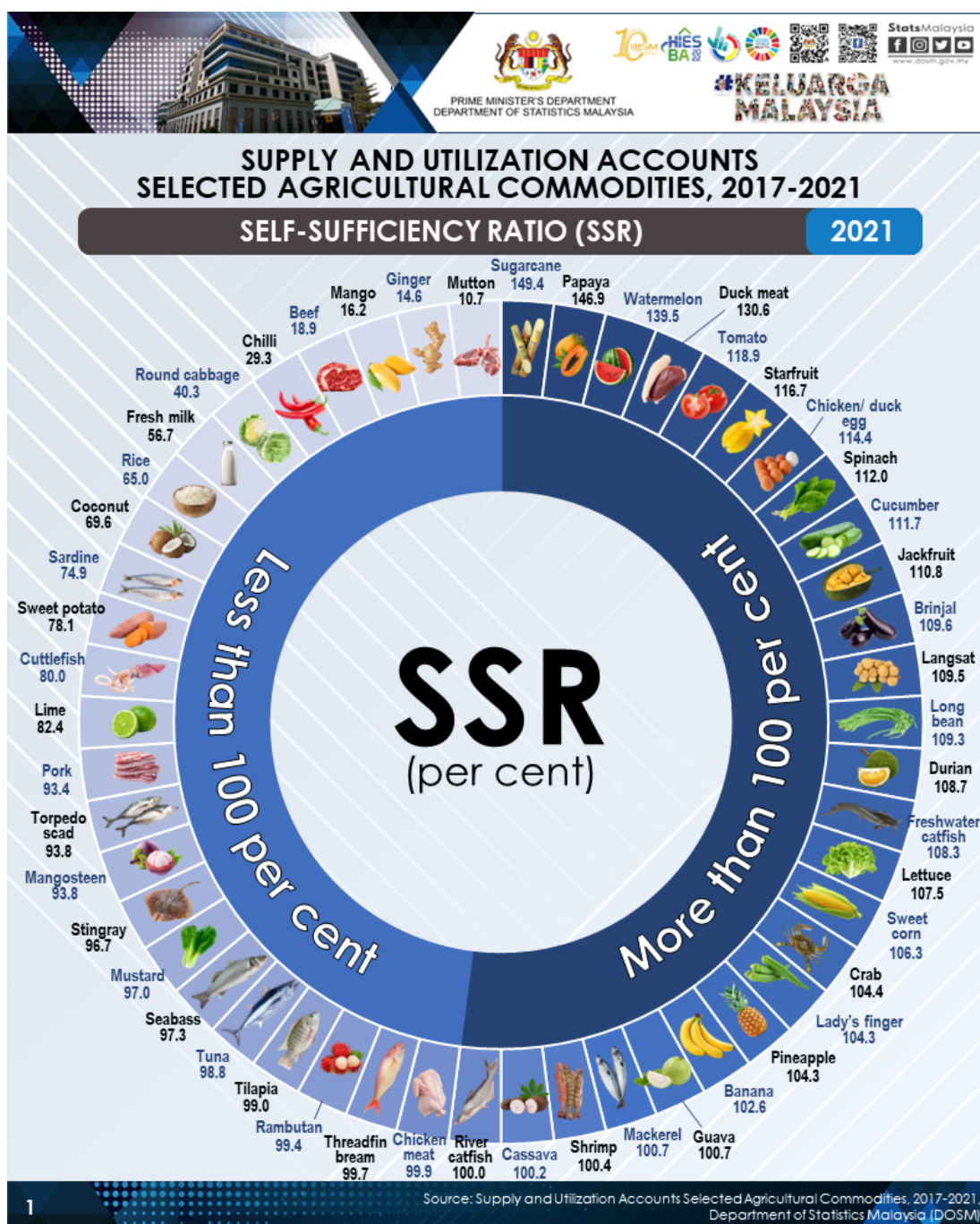




PRIME MINISTER'S DEPARTMENT
DEPARTMENT OF STATISTICS MALAYSIA

SUPPLY AND UTILIZATION ACCOUNTS SELECTED AGRICULTURAL COMMODITIES,
MALAYSIA 2017-2021



PER CAPITA CONSUMPTION (PCC)

2021

(kg/year)

CROPS

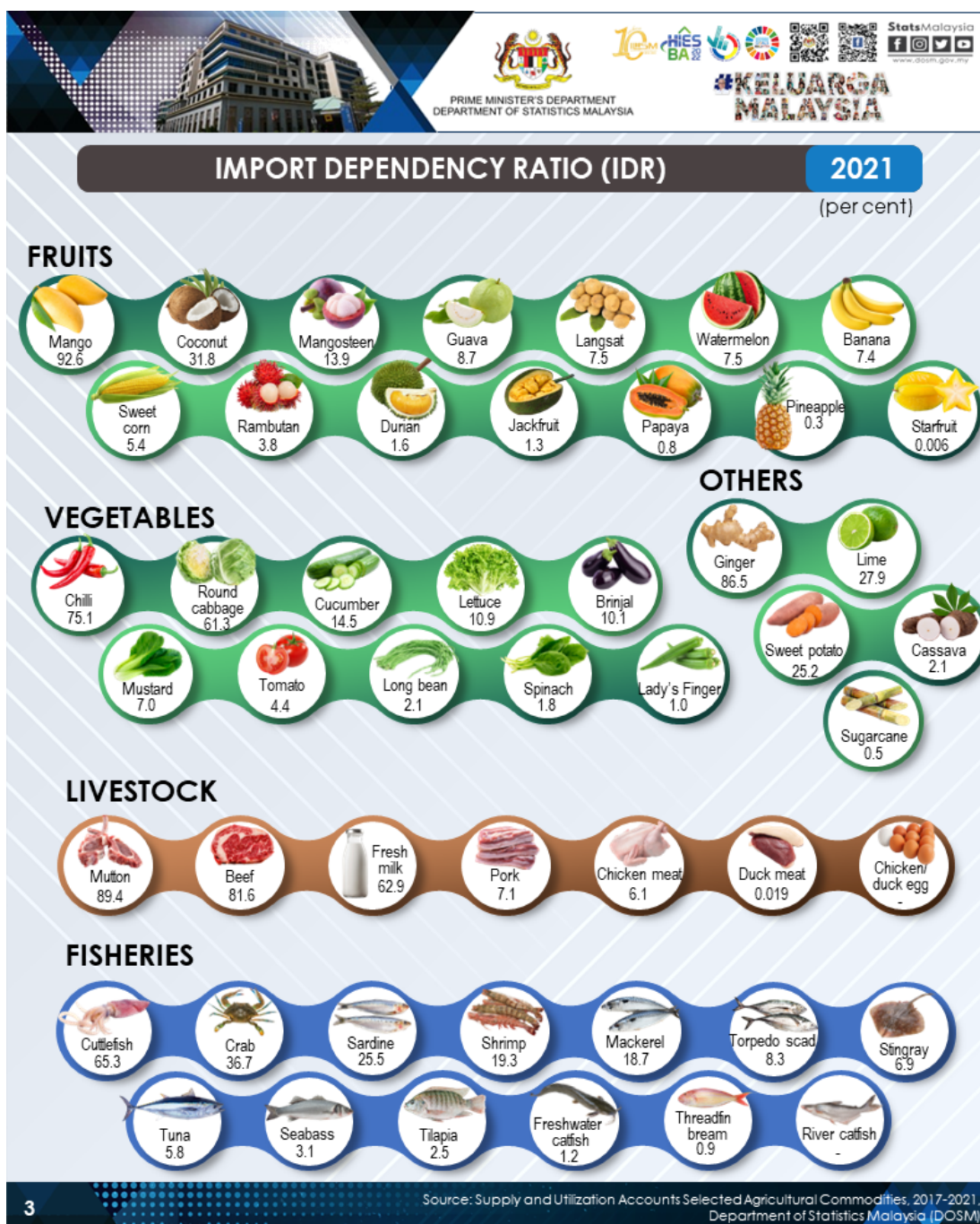
 Rice 79.0	 Coconut 23.0	 Durian 12.2	 Banana 9.3	 Pineapple 8.4
 Watermelon 2.6	 Mango 2.2	 Sweet corn 1.9	 Jackfruit 1.7	 Rambutan 1.6
 Papaya 1.2	 Guava 1.0	 Mangosteen 0.8	 Langsat 0.4	 Starfruit 0.2
 Round cabbage 6.6	 Mustard 4.7	 Tomato 4.2	 Cucumber 2.6	 Chilli 2.2
 Lettuce 2.2	 Spinach 2.1	 Lady's finger 1.7	 Long bean 1.6	 Brinjal 1.2
 Sweet potato 2.0	 Ginger 1.7	 Lime 0.7	 Cassava 0.1	 Sugarcane 0.005

LIVESTOCK

 Chicken meat 46.1	 Chicken/duck egg 20.8	 Pork 17.3
 Beef 5.5	 Fresh milk (litre/year) 2.1	 Duck meat 1.6
		 Mutton 1.0

FISHERIES

 Mackerel 4.8	 Shrimp 4.6	 Sardine 2.4	 Cuttlefish 2.2
 Tuna 2.0	 Seabass 1.2	 Tilapia 1.2	 Threadfin bream 1.1
 Torpedoscad 0.9	 Freshwater catfish 0.9	 River catfish 0.6	 Crab 0.4
		 Stingray 0.3	



26 selected agricultural items recorded Self-Sufficiency Ratio (SSR) 100 per cent and more

The compilation of SUA encompasses the selected agricultural commodities refers to three categories, namely crops (fruits, vegetables and others), livestock and fisheries. In 2021, a total of 50 agricultural commodities was covered and 26 of them recorded self-sufficiency ratio (SSR) more than 100.0 per cent.

Crops

Selected Fruits

Out of 14 Selected Fruits, ten fruits recorded SSR that exceeded 100.0 per cent in 2021. SSR that reaches 100.0 per cent and above indicates that the production is sufficient to meet domestic needs. Papaya remained as the highest SSR at 146.9 per cent, followed by watermelon (139.5%) and jackfruit (110.8%). Meanwhile, the country's ability to produce local mango to meet domestic demand was still low at 16.2 per cent, declining from 20.2 per cent in 2020. Per Capita Consumption (PCC) of coconut remained the highest at 23.0 kg/year, followed by durian (12.2 kg/year) and banana (9.3 kg/year).

Selected Vegetables

Seven out of ten Selected Vegetables in 2021 recorded SSR of more than 100.0 per cent. The highest SSR was tomato at 118.9 per cent. Meanwhile, chilli remained as the lowest SSR (29.3%). Round cabbage remained as the most favored vegetable when it

recorded the highest PCC of 6.6 kg/year, while the PCC of brinjal was the lowest among the selected vegetables at 1.2 kg/year.

Other Selected Crops

Only two Other Selected Crops from five recorded SSR of more than 100.0 per cent in 2021 which were sugarcane, 149.4 per cent and cassava, 100.2 per cent. Sweet potato recorded PCC of 2.0 kilograms per year, followed by ginger (1.7 kg/year) and lime (0.7 kg/year).

Livestock

Two items for Selected Livestocks recorded SSR more than 100.0 per cent that were duck meat (130.6%) and chicken/ duck egg (114.4%). The country is still highly depending on import of beef and mutton when the IDR for both exceeded 50.0 per cent which beef (81.6%) and mutton (89.4%). The PCC of chicken meat was the highest at 46.1 kilograms per year followed by chicken/ duck eggs (20.8 kg/year or 347 pieces).

Fisheries

Five out of 13 Selected Fisheries recorded SSR exceeded 100.0 per cent in 2021 namely, freshwater catfish (108.3%), crab (104.4%), mackerel (100.7%), shrimp (100.4%) and river catfish (100.0%). Mackerel, which consists of temenong/ pelaling, tenggiri and kembung, was the most favored fish based on PCC of 4.8 kilograms per year as compared to other fishes.

The full publication of the Supply and Utilization Accounts Selected Agricultural Commodities, Malaysia 2017-2021 can be downloaded through [eStatistik](#) portal.

Released by:

DEPARTMENT OF STATISTICS, MALAYSIA
12 September 2022

Contact person:

Baharudin Mohamad
Public Relation Officer
Strategic Communication and International Division
Department of Statistics, Malaysia
Tel : +603-8885 7942
Fax : +603-8888 9248
Email : baharudin[at]dosm.gov.my