



# NEWSLETTER

## STATSDIGITAL PORTAL MANAGEMENT

### 2 ACCESS CONTROL

- ❖ Access limit depends on the user profile.

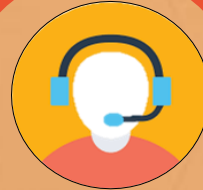


### 1 REGISTRATION

- ❖ First time user need to register using a valid email.
- ❖ While existing user will sign in using the registered email address.
- ❖ This step is to ease the system administrator in identifying type of users accessing the portal.

### 3 HELP DESK

- ❖ An interaction medium for the users to submit their queries or requests in text messages form to the Portal Administrator.



### 4 FEEDBACK

- ❖ A platform for users to leave their suggestions or comments to improve the StatsDigital portal and to enhance the portal quality in line with the Department's standard requirements.
- ❖ Also equipped with star rating system by users.



### 5 CONTENT MANAGEMENT

Built with the following features:

#### (i) Publication search

- ❖ Equipped with a fuzzy search function using elastic search.
- ❖ E-book presentation in a flipbook form.

#### (ii) Material downloading

- ❖ The My Kart function enable users to select material and the materials can be downloaded in bulk or specific material only.

#### STATSDIGITAL PORTAL

3 Categories 1,822 Publications\*

17 Indicators 971 Data Sets\*

82 Sub Indicators



\* As at 20 November 2020

